



Catalog

Greetings from your Hargrove Exhibitor Services team! We are standing by to help ensure you have a productive show experience. Please contact us if you have questions or need more information. We look forward to doing whatever it takes to help you.

See you at the show!

Hargrove

Tables

At Hargrove we know that displaying your company's products and materials effectively is an important consideration as you ensure your exhibit program is successful. You may also want to create a space for your sales team to chat with clients or offer give aways. The Hargrove inventory includes a variety of standard and special order tables and counters to ensure your exhibit program's success. Need more options? Contact us today.



• ROUND TABLES

approx. 18" tall x 30" in diameter
approx. 30" tall x 30" in diameter
approx. 42" tall x 30" in diameter

Actual item may vary.



• DRAPED

Table: 30" tall x 24" wide
Counter: 42" tall x 24" wide



• UNDRAPED

Table: 30" tall x 24" wide
Counter: 42" tall x 24" wide

NOTE: Four, six and eight foot long tables available.

Table Drapery

Tables are skirted on three sides with a fire-retardant poly sateen fabric and topped with white vinyl. The fourth side of the table can be draped at an additional cost. Undraped tables include the white vinyl table top.



Black



Blue



Teal



Purple



Burgundy



Red



Gold



Grey



White

Actual colors may vary. Some colors not available for certain shows.

Need something not included in our Catalog?

Contact us today: exhibitorservices@hargroveinc.com • +1 301.306.4627

Chairs

When you need seating for a product demonstration, one-to-one sit down with a client or seating for a presentation, Hargrove offers a variety of seating options to suit your needs and booth style. Standard seating is depicted. Contact us today for more seating options.

- **PADDED SIDE CHAIR**

approx 30" tall x 17" wide x 22" deep

- **BARSTOOL**

approx 42" tall x 19" wide x 21" deep



Actual item may vary.

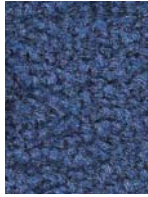
Carpet

The details matter. Materials used in your booth must complement your brand, products and services. Hargrove offers an unlimited range of carpet colors and padding to ensure your booth impresses attendees.

Standard



Black



Blue



Burgundy



Grey



Red



Teal

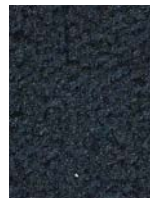
Plush



Black



Charcoal



Navy



Nu-Blue



Platinum



Red

CARPET DETAILS

- Custom colors available
- Plush carpet orders include protective clear plastic covering at no additional charge.
- We recommend special cut or plush carpet for island, peninsula or inline booths larger than 10' x 40' for color matching.
- Special cut carpet which is new or nearly new carpet and cut from the same roll is available to ensure color match at an additional cost.
- Actual colors may vary.
- Some colors not available for certain shows.

Accessories

Ensuring your exhibit's success is more important than ever before. Hargrove offers a variety of accessories to help you gather business cards, guide booth traffic and keep your booth tidy so your prospective clients have the best experience possible.



- **EASEL**

approx. 56" tall x
30" wide x 27" deep



- **LITERATURE RACK**

approx. 60" tall x
11" wide x 14" deep



- **SIGN HOLDER**

for 28" tall x 22"
wide sign



- **STRAIGHT BAG RACK**

approx. 49" to 70" tall
x 12" wide x 25" deep



- **WASTEBASKET**

approx. 16" tall x
11" wide x 9" deep



- **RETRACTABLE STANCHION**

approx. 42" tall with
14" diameter base, 8' belt



- **CHROME STANCHION**

approx. 42" tall with
14" diameter base,
8' rope



- **SLANTED BAG RACK**

approx. 49" to 70" tall x
12" wide x 25" deep



- **POSTERBOARD (HORIZONTAL)**

approx. 4' tall x
8' wide



- **POSTERBOARD (VERTICAL)**

approx. 8' tall x
4' wide



- **FISH BOWL**

Actual item may vary.

Need something not included in our Catalog?

Contact us today: exhibitorservices@hargroveinc.com • +1 301.306.4627

Counters

Need a cabinet or display case that can incorporate your graphics or includes lighting? Hargrove offers a variety of systems to enhance your exhibit space and a few of our options are included here.



- **LARGE CABINET**

approx. 42" tall x 82" wide x 23" deep



- **SMALL CABINET**

approx. 42" tall x 43" wide x 23" deep



- **ILLUMINATED DISPLAY CASE**

approx. 41" tall x 80" wide x 21" deep

NOTE: electricity required



- **CURVED COUNTER**

approx. 42" tall x 60" wide x 22" deep

Actual item may vary.

Signage and Graphics

Need to announce a presentation, showcase in-booth talent, schedule or promote a new product line? Hargrove can help you with all of your graphics needs.

HARGROVE SIGNAGE AND GRAPHICS ADVANTAGES

- Quality, state-of-the-art printing
- Superb resolution
- Experienced team accustomed to fast turn arounds
- Environmentally friendly materials at competitive prices



• VINYL BANNERS

Unlimited sizes. Priced per square foot



• STANDARD CARD STOCK SIGNS

7" x 11"
11" x 14"
7" x 44"
14" x 22"
14" x 44"
22" x 28"
28" x 44"

Cost-Effective Rental Booth Solutions

Interested in learning more about our money-saving booth solutions? Our Exhibits team is standing by to ease the stress and cost of planning your exhibit.

BENEFITS OF A HARGROVE MODULAR SYSTEM (HMS) RENTAL

- Consolidate costs and preparation time
- Achieve a custom look at a ready-made price
- Simply add products, literature and booth personnel to complete your exhibit

Order one of our standard, money saving rental booths — or allow us to customize one for you.



CUSTOM RENTAL EXHIBITS

Need a custom rental exhibit that stops attendees in their tracks? Hargrove's award-winning Exhibits team is ready to help take your show presence to the next level — at an affordable cost.



For a custom rental booth quote, contact us at +1 301.306.4627 or rentalbooths@hargroveinc.com